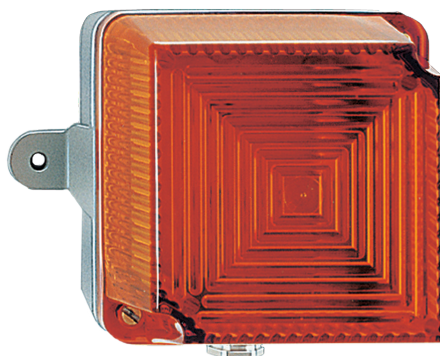


Strobe Light BLK

Robust optical signalling device for indoor and outdoor applications



Übersicht

Optical signalling is often required for warning or notifying purposes in particularly noisy areas. The BLK Strobe Light provides clearly visible signals for that purpose. The sturdy housing of ingress protection IP 65 is suitable for both indoor and outdoor applications. The signalling light is available in 5 different colours. The modern electronics are mounted on a printed circuit

board of glass fibre reinforced epoxy resin. A powerful electronic flash tube converts the electrical energy stored in the flash capacitor into high-efficiency light flashes. The weatherproof coated aluminium die-cast housing is equipped with a ribbed cap made of impact-resistant plexiglass. The strobe light is provided with a M20 cable gland for cable diameters of 8 to 12 mm.

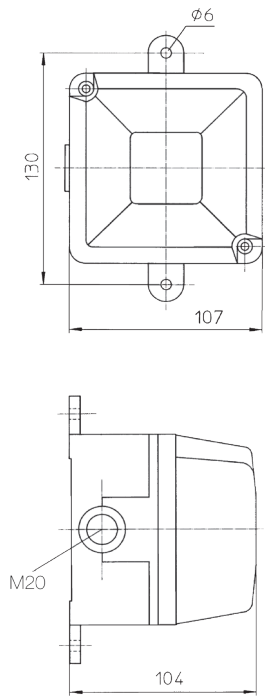
Features

- Ingress protection IP 65
- Compensation valve to prevent condensation water
- Types BLK 32 and BLK 42 for extended temperature range of -50 °C to +50 °C
- Flash energy 5 Joule, 15 Joule

Specifications

Housing	Seawater-resistant aluminium, weatherproof varnish
Colour	Light grey
Cap	Plexiglass (Makrolon for BLK 32/42)
Cap colour	Transparent, red, amber, green, blue
Ingress protection	IP 65 according to EN 60529
Protection class	I
Cable gland	1 x M20 for cable diameters 8-12 mm
Connection terminals	Terminal capacity: 2.5 mm ² single wire 1.5 mm ² fine-wire
Flash energy	BLK 30/40, 32/42: 5 joule BLK 50/60: 15 joule
Flash frequency	BLK 30/40, 32/42: 60/min BLK 50/60: 30/min
Operating conditions	Indoors and outdoors
Operating position	Any (preferably with cable gland facing downward)
Operation mode	BLK 30/40, 32/42: continuous operation BLK 50/60: short term operation 5 minutes
Temperature range	BLK 30, 40, 50, 60 BLK 32, 42
Operation	-30 °C to +50 °C -50 °C to +50 °C
Storage	-30 °C to +70 °C -50 °C to +70 °C
Weight	Approx. 0.7 kg

General arrangement drawing (all dimensions in mm)



Ordering data

* The full article number is made up by appending the colour code to the article numbers given

Type	Designation	Input voltage	Tolerance	Current consumption	Si 5 x 20	Art. No.*		
BLK 30	Strobe Light	24 VAC, 50-60 Hz	15-32 V	0,50 A	T 2,0/250 H	FHF 224 110 ..		
BLK 30	Strobe Light	230 VAC, 50-60 Hz	-10/+6 %	0,07 A	T 2,0/250 H	FHF 224 112 ..		
BLK 32	Strobe Light	230 VAC, 50-60 Hz	-10/+6 %	0,07 A	T 2,0/250 H	FHF 224 212 ..		
BLK 40	Strobe Light	12 VDC	9-16 V	0,70 A	T 1,0/250 H	FHF 224 113 ..		
BLK 42	Strobe Light	12 VDC	9-16 V	0,70 A	T 1,0/250 H	FHF 224 213 ..		
BLK 40	Strobe Light	24 VDC	15-32 V	0,30 A	T 2,0/250 H	FHF 224 114 ..	transparent	01
BLK 42	Strobe Light	24 VDC	15-32 V	0,30 A	T 1,0/250 H	FHF 224 214 ..	red	02
BLK 40	Strobe Light	48 VDC	33-60 V	0,18 A	T 2,0/250 H	FHF 224 115 ..	amber	03
BLK 50	Strobe Light	230 VAC, 50-60 Hz	-10/+6 %	0,25 A	T 2,0/250 H	FHF 224 122 ..	green	04
BLK 60	Strobe Light	24 VDC	16-30 V	0,90 A	T 2,0/250 H	FHF 224 124 ..	blue	05

Note: All specifications, dimensions, weights and tolerances are nominal (typical) and Eaton reserve the right to vary all data without prior notice. No liability is accepted for any consequence of use.